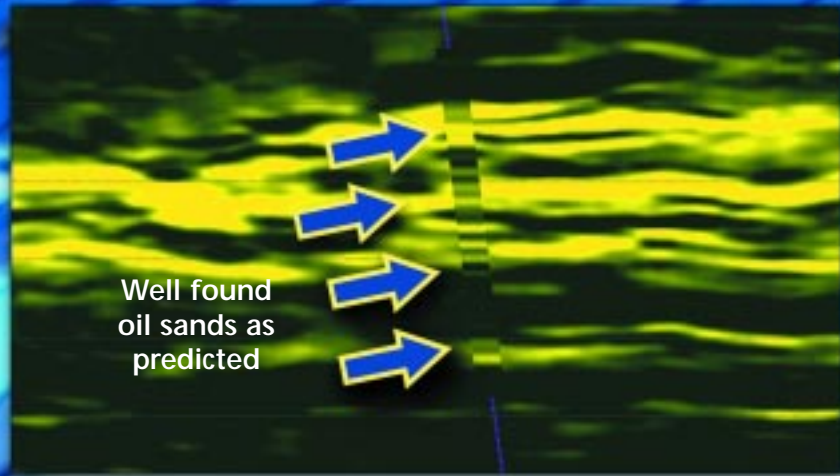


# Appraisal of a giant West African field



*Predicted 3D sand indicator model overlain by a V-clay log. The well was planned on the basis of the model, and confirmed the prediction.*

## TotalFinaElf's objective

When TotalFinaElf wanted to appraise a giant West African field, it needed an accurate, 3D lithology, and porosity distribution model to help position new wells.

## Prediction

Jason applied its unique RockTrace™ software to construct the model. RockTrace quantitatively combines seismic, AVA, well log, geological, and petrophysical information to generate accurate and reliable acoustic and shear impedance models. Multiple offset stacks and a small number of exploration and appraisal wells were used as input. The model predicted lithology (sand/shale), porosity, and net pay in four separate reservoir zones.

## Drilling result

Of the three new wells drilled by TotalFinaElf on the basis of the model, all three wells penetrated oil sands. Moreover, the drilling confirmed that for the four reservoir zones penetrated in these wells, the model correctly predicted sand and accurately predicted porosity. This level of accuracy allows optimizing appraisal wells, optimal development plans and results in significant savings on development costs.

**TOTAL FINA ELF**

**JASON**

<b>The Netherlands</b> ☎ +31 10 280 1515	<b>USA</b> ☎ +1 281 597 1777	<b>Singapore</b> ☎ +65 354 6585
<b>UK (England)</b> ☎ +44 1483 778 000	<b>UK (Scotland)</b> ☎ +44 1224 826 777	<b>Canada</b> ☎ +1 403 263 3340
<b>Australia &amp; New Zealand</b> ☎ +61 8 9268 2484	<b>Middle East</b> ☎ +971 4881 9483	<b>Indonesia</b> ☎ +62 21 575 0854

Find out more at [www.jasongeo.com](http://www.jasongeo.com)

**JASON**

#1 in reservoir characterization

*Visit us at the SEG in San Antonio on booth 1327,  
and at the SPE in New Orleans on booth 423.*