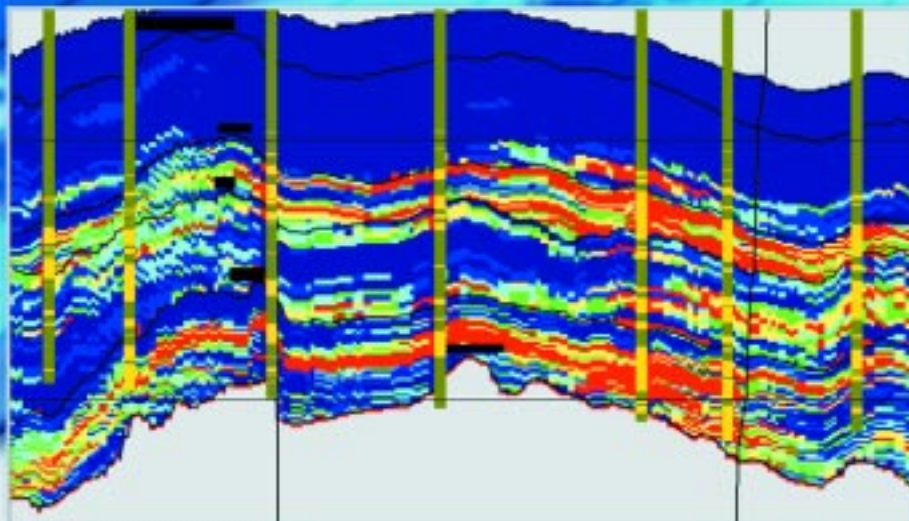


How can you get more from thin sand reservoirs?



In this cross section reds indicate the highest probability of sand, while blues indicate the highest probability of shale. This shows that the upper and lower sands are separate units.

Apply technology...

When one of our customers wanted to predict sand and shale distributions for future well planning, Jason was asked to construct a sand/shale model for the field. The seismic reflection data couldn't distinguish between individual sands and shales, so Jason applied its InverTrace and StatMod (stochastic inversion) techniques.

...predict...

Jason's results showed that the upper and lower sand units – previously assumed to be connected – were in fact isolated, and that the deeper sands had not been drained.

...and drill

Our customer decided to target these potential reserves. The company drilled into the deeper sand bodies and the wells flowed oil.

The Netherlands
☎ +31 10 280 1515

UK (England)
☎ +44 1483 778 000

Australia & New Zealand
☎ +61 8 9268 2484

USA
☎ +1 281 597 1777

UK (Scotland)
☎ +44 1224 826 777

Middle East
☎ +971 4881 9483

Singapore
☎ +65 354 6585

Canada
☎ +1 403 263 3340

Indonesia
☎ +62 21 575 0854

Find out more at www.jasongeo.com

JASON

#1 in reservoir characterization